

**SIGN LEGEND**  
NTS

-  M4-8A  
24"x18"
-  M4-9L  
30"x24"
-  M4-9R  
30"x24"
-  M4-9S  
30"x24"
-  M4-9SL  
30"x24"
-  M4-9SR  
30"x24"
-  M4-9-1BL  
30"x24"
-  M4-9-1BR  
30"x24"
-  M4-10L  
48"x18"
-  M4-10R  
48"x18"

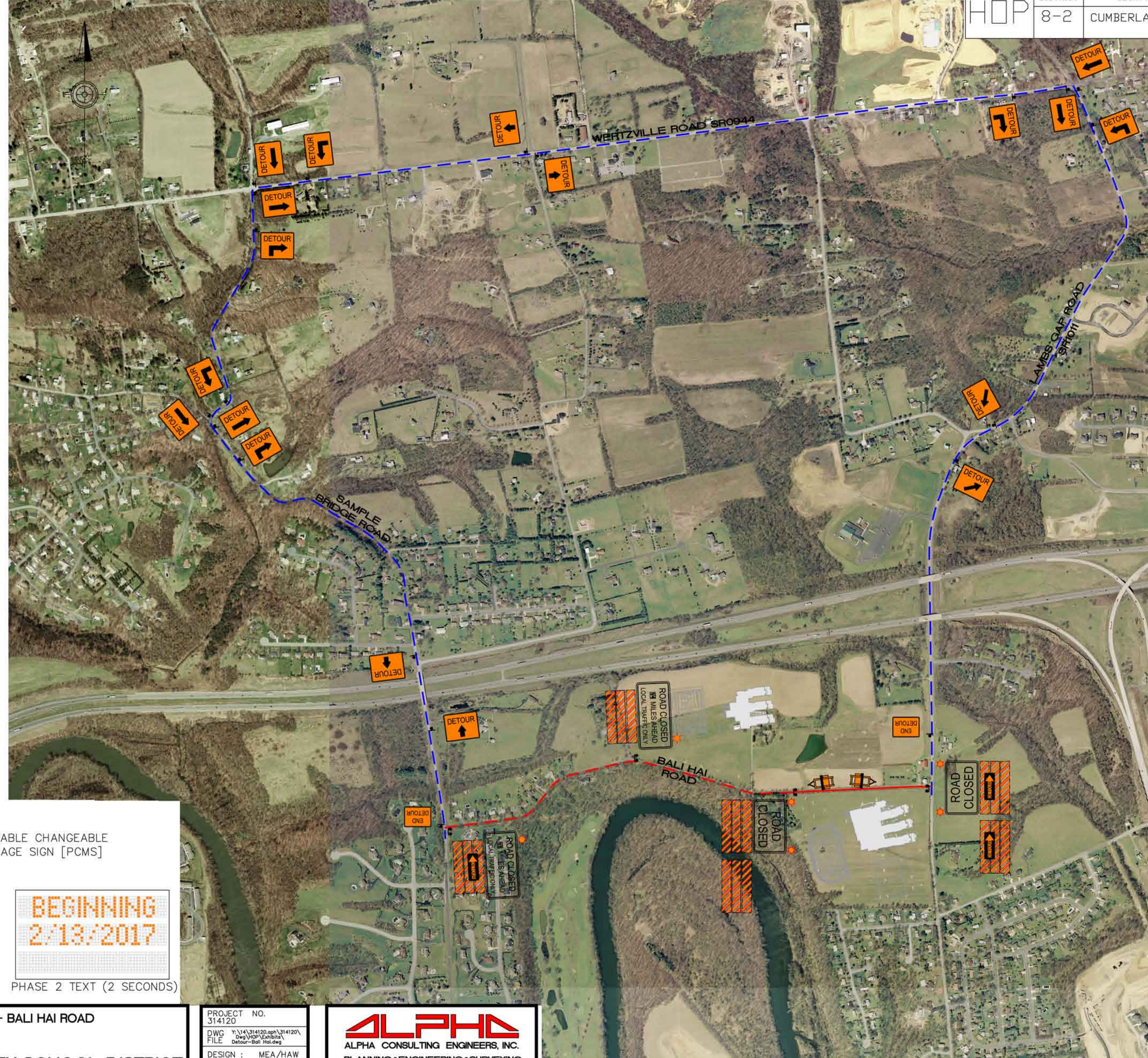
 PORTABLE CHANGEABLE MESSAGE SIGN [PCMS]

 THIS ROAD WILL BE CLOSED

 BEGINNING 2/13/2017

PHASE 1 TEXT (3 SECONDS)




PHASE 2 TEXT (2 SECONDS)






HOP	DISTRICT 8-2	COUNTY CUMBERLAND	TOWNSHIP HAMPDEN	ROUTE 1011	SECTION 0944	SHEET 1 of 1
-----	--------------	-------------------	------------------	------------	--------------	--------------

REVISION NUMBER	REVISIONS	DATE	BY
1			

**SIGN LEGEND**  
NTS

-  TYPE B FLASHER
-  ROAD CLOSED  
R11-2  
48"x30"
-  ROAD CLOSED  
MILES AHEAD  
LOCAL TRAFFIC ONLY  
R11-3A  
60"x30"
-  TYPE III BARRICADE

**ROUTE LEGEND**  
NTS

-  -- LIMIT OF ROAD CLOSURE
-  -- LIMIT OF LOCAL TRAFFIC ONLY
-  -- DETOUR ROUTE

**NOTES**

FURNISH, ERECT, PLACE AND MAINTAIN TRAFFIC CONTROL SIGNS AND DEVICES. MAINTAIN TRAFFIC DURING HOURS OF CONSTRUCTION AND AT ALL OTHER TIMES IN ACCORDANCE WITH THE METHODS INDICATED ON THESE DRAWINGS AND THE FOLLOWING:

- PENNDOT PUBLICATION 35, APPROVED CONSTRUCTION MATERIALS (BULLETIN15);
- PENNDOT PUBLICATION 46, TRAFFIC ENGINEERING MANUAL;
- PENNDOT PUBLICATION 72M, STANDARDS FOR ROADWAY CONSTRUCTION;
- PENNDOT PUBLICATION 111, PAVEMENT MARKINGS AND SIGNING STANDARDS;
- PENNDOT PUBLICATION 212, OFFICIAL TRAFFIC CONTROL DEVICES;
- PENNDOT PUBLICATION 213, TEMPORARY TRAFFIC CONTROL GUIDELINES;
- PENNDOT PUBLICATION 236, HANDBOOK OF APPROVED SIGNS;
- PENNDOT PUBLICATION 408, SPECIFICATIONS;
- MUTCD, CURRENT EDITION.

THE CONTRACTOR MUST ARRANGE FOR INSPECTION OF ALL TRAFFIC CONTROL DEVICES PRIOR TO START OF WORK.

DRIVEWAYS WILL BE KEPT ACCESSIBLE AT ALL TIMES. LOCATE ALL SIGNS SO THAT SIGHT DISTANCES WILL NOT BE OBSTRUCTED AT DRIVEWAYS AND LOCAL ROADS.

PCMS SHALL BE INSTALLED FOR A 2 WEEK PERIOD PRIOR TO THE ROAD CLOSURE. MODIFY DATE DISPLAYED TO MEET THIS REQUIREMENT.

COVER M SERIES DETOUR SIGNS PRIOR TO ACTUAL ROAD CLOSURE.

THE CONTRACTOR MUST NOTIFY THE DISTRICT 8-0 TRAFFIC MANAGEMENT CENTER (TMC) TWO (2) WEEKS IN ADVANCE OF ACTIVATING THE DETOUR.

THE CONTRACTOR SHALL PROVIDE WRITTEN NOTIFICATION TO LOCAL EMERGENCY AUTHORITIES (POLICE, FIRE, MEDICAL, ETC.), AFFECTED BUSINESSES, SCHOOL DISTRICT(S), THE GENERAL PUBLIC AND THE TOWNSHIP ENGINEER(S) AT LEAST FOURTEEN DAYS PRIOR TO ANY SIGNIFICANT TRAFFIC IMPACTS (e.g., LONG TERM LANE RESTRICTIONS, DETOURS). THE CONTRACTOR MUST PROVIDE AS IMMEDIATE AS POSSIBLE ACCESS FOR EMERGENCY SERVICES DURING AN INCIDENT RESPONSE.

UNCOVER M SERIES DETOUR SIGNS IMMEDIATELY PRIOR TO THE ROAD CLOSURE AND PLACE R SERIES DETOUR SIGN ASSEMBLIES TO CLOSE ROAD. ENSURE THAT R11-3A SIGN ASSEMBLIES ARE PLACED OUT OF TRAVEL PATHS AND DO NOT HINDER LOCAL TRAFFIC ACCESS.

ALL SIGNS AND DEVICES ARE TO BE MAINTAINED IN NEW OR LIKE NEW CONDITION.

WHILE BALI HAI ROAD IS CLOSED THE CONTRACTOR SHALL MAINTAIN THE CLOSED SECTION FOR EMERGENCY ACCESS, INCLUDING BUT NOT LIMITED TO PAVEMENT STRUCTURE, PLOWING, ETC.

REMOVE THESE DEVICES IMMEDIATELY UPON COMPLETION OF THE WORK. THE DEPARTMENT WILL REMOVE ANY TRAFFIC CONTROL DEVICES ERECTED BY DEPARTMENT FORCES.

**DETOUR PLAN - BALI HAI ROAD**

**CUMBERLAND VALLEY SCHOOL DISTRICT**

SILVER SPRING & HAMPDEN TOWNSHIP, CUMBERLAND COUNTY, PENNSYLVANIA

PROJECT NO. 314120
DWG FILE Y:\14\314120.dwg\314120\Detour-Bali_Hai.dwg
DESIGN : MEA/HAW
CHECKED : MEA
DATE : 01-20-2017

**ALPHA**  
ALPHA CONSULTING ENGINEERS, INC.

PLANNING • ENGINEERING • SURVEYING  
115 LIMEKILN RD, P.O. BOX 'G'  
NEW CUMBERLAND, PA 17070  
PHONE: (717) 770 - 2500  
FAX: (717) 770 - 2400  
WWW.ALPHACEI.COM

SCALE

500 0 500

SEAL